

PROTECTING YOUR GUTTERS

Do I Need Gutter Guards?

What are Gutter Guards?

Gutter guards are protective barriers, made primarily from metal, that are installed on top of gutters. They are designed with small openings, often in the form of mesh, perforations, or slots, that filter out debris such as leaves, twigs, pine needles, and other particles that could otherwise accumulate inside the gutter.

By maintaining a consistent flow of water, gutter guards help support the efficient operation of the drainage system.



Why would I need them?

1. Leaf Protection

When leaves and debris build up in gutters, they can quickly create blockages, leading to overflow. This can cause water to spill over the edges instead of being directed through the downspouts, potentially damaging the foundation. Overflowing water can run down exterior walls, resulting in staining, warping, or even weakening the siding's structural integrity. The impact of clogged gutters can go beyond just exterior damage, though. Water can seep into the foundation, causing cracks or basement flooding and weakening the structure. Standing water in clogged gutters can also back up onto the roof, seeping under shingles and causing leaks or rot, which often remains unnoticed until costly repairs are needed.



WHAT ARE GUTTER GUARDS?

And Why Would I Need Them?

2. Pest Protection

Without gutter guards, gutters can become clogged with leaves and other debris, creating a damp environment that attracts various pests. Squirrels and rats, in particular, are adept at climbing up downspouts to gain access to the roof, where they may gnaw through vent stacks or damaged areas to reach the attic and build nests for their young. This can lead to extensive damage as these rodents chew through insulation, wiring, and other materials inside the attic.



Additionally, clogged gutters filled with wet debris provide ideal conditions for ants and mosquitoes. When leaves are allowed to build up, these ants can crawl underneath the starter shingle and continue under the roof decking, finding their way into the home and the standing excess water harbors and promotes mosquitoes, creating potential harmful health issues.

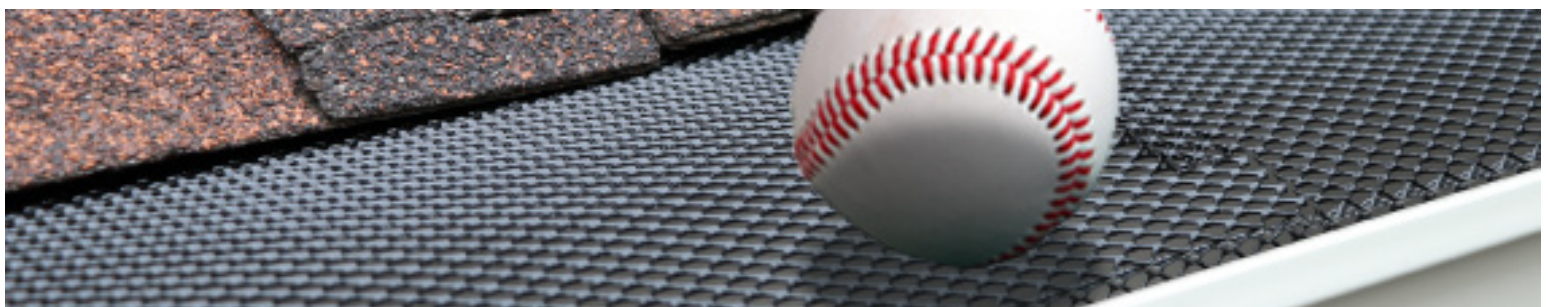
3. Weather Protection

When hail falls, it can create significant debris, such as broken branches and leaves, that can clog gutters and downspouts. This blockage can lead to water accumulation, increasing the risk of ice forming within the gutters. Ice buildup can create additional weight, putting stress on the gutter system and potentially causing it to pull away from the house or even break.

Moreover, when melting ice or snow meets a clogged gutter, it can create ice dams, which are formed when melted snow refreezes at the roof's edge, blocking water from draining properly. As a result, the backed-up water can pool under shingles and penetrate the roof structure, causing leaks and promoting mold growth.

4. Unexpected Protection

Finally, gutter guards prevent unexpected items, such as baseballs or pet toys, from clogging the gutter system. Accidental throws from neighbors or playful pets can result in balls landing on the roof, where they may roll into the gutters and create blockages. Gutter guards, create an effective barrier that keeps out both organic debris and foreign objects, ensuring that the gutter system remains clear and functional.



THE BEST GUTTER GUARD

How To Choose

The most important thing in choosing the 'Best' Gutter Guard is to understand that there is no 'Best' - there is only the best for your particular situation. There are many factors that need to be considered. Your contractor will be able to assist you in finding the right solution for the specific challenges and requirements of your area. Keep in mind that all gutter guards require maintenance, some more than others.

- 1. Assess your need:** Determine your primary reason for installing gutter guards. Are you mainly concerned about preventing leaves and debris from clogging your gutters, do you also want to keep out pests like birds and rodents, or do you want to collect rain water for irrigation?
- 2. Consider your climate:** If you live in an area with heavy rainfall or frequent storms, you'll need a gutter guard that can handle high water flow, if you live in an area with a lot of snow you'll need something less porous and so on. Similarly, different tree types have different requirements; pine needles, sap, and pollen are all very different challenges that require different solutions.
- 3. Compare costs:** Are you looking for a less expensive solution, or something that fixes the problem, even if it costs more? Keep in mind that while upfront costs are important, it's also essential to consider the long-term value and performance of the product.
- 4. Roof Type and Pitch:** The type (metal, tile, slate, shingle) and pitch of your roof can affect how water flows into the gutters. Steep roofs may require gutter guards with the ability to more effectively capture high volumes of water due to increased water speed, while flat roofs may need guards with a smoother surface to prevent debris buildup.

There are several different types of gutter guards available to you, each with their own strengths and weaknesses.

- 1. Expanded Wire:** Laid on top of gutters to block medium to large debris.

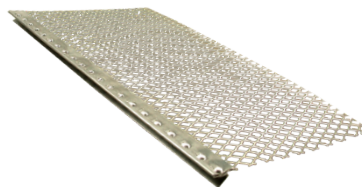
Pros: Lower upfront costs, blocks large debris, blocks most common pests, allows higher volumes of water, holes are large enough to allow smaller debris to pass through, rodent resistant.

Cons: Pine needles can get stuck.

ALUMINUM EXPANDED WIRE GUTTER GUARD

Drop-In

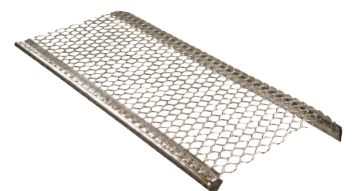
4' pcs, 50 pcs/box
5" - part # 3813050099
6" - part # 3813060099



Available in: Aluminum

Fast Screen

4' pcs, 50 pcs/box
5" - part # 3815050099
6" - part # 3815060099

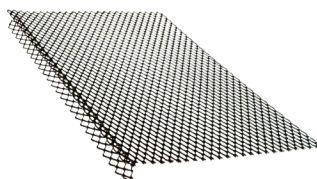


Available in: Aluminum

POWDER COATED EXPANDED WIRE GUTTER GUARD

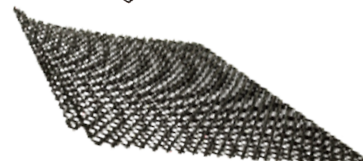
Roll Lock

4' pcs, 25 pcs/box
5" - part # 3821050XXX
6" - part # 3821060XXX
7" - part # 3821070XXX



Flat Lock

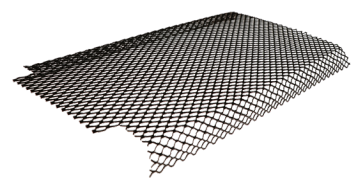
4' pcs, 25 pcs/box
6" - part # 3825060XXX
7" - part # 3825070XXX
8" - part # 3825080XXX
9" - part # 3825090XXX



Available in: Black (004), Solid Copper (890)

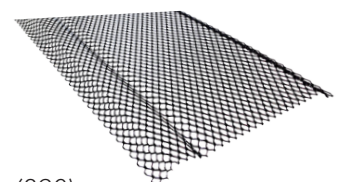
Step Lock

4' pcs, 25 pcs/box
5" - part # 3823050XXX
6" - part # 3823060XXX
7" - part # 3823070XXX



Round Lock for HR 6"

4' pcs, 25 pcs/box
6" - part # 3827060XXX



Available in: Black (004), Solid Copper (890)

THE BEST GUTTER GUARD

How To Choose

2. **Perforated:** Sheet metal with perforations.

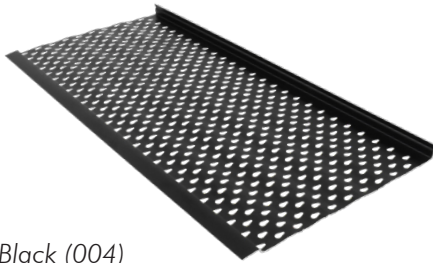
Pros: Cost effective, allows moderate to high drainage, easily sheds large debris, pest resistant.

Cons: Can overflow in high volume areas such as inside corners.

PERFORATED GUTTER GUARD

Eave N Flow Elite (HB)

4' pcs, 50 pcs/box
5" - part # 3915050XXX
6" - part # 3915060XXX



Available in: White (001), Black (004)

Smart Flow

4' pcs, 50 pcs/box
5" x 4' - part # 3914000XXX
6" x 4' - part # 3914010XXX
10' pcs, 25 pcs/box
5" x 10' - part # 3914100XXX
6" x 10' - part # 3914110XXX
7" x 10' - part # 3914120XXX
Available in: White (001), Black (004)



3. **Mesh:** Stainless steel wire mesh with front and back edges to connect to gutters.

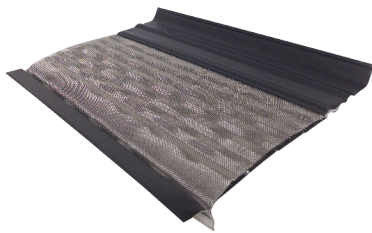
Pros: Blocks most debris and pests, most effective in handling ice and snow.

Cons: Higher upfront cost, tighter weaves can clog with pollen.

STAINLESS STEEL METAL MESH GUTTER GUARD

Mesh Guard

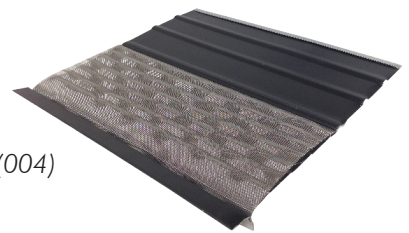
4' pcs, 25 pcs/box
5" - part # 3930050004
6" - part # 3930060004



Available in: Black

Mesh Guard Panel

4' pcs, 25 pcs/box
part # 3931050XXX



Available in: White (001), Black (004)

4. **Louvered:** Has rows of reverse louver holes slightly angled to allow water into the gutter system while deflecting debris over the front edge.

Pros: Easy to clean, prevents most debris from entering gutter.

Cons: Can overflow in high volume areas such as inside corners.

LOUVERED GUTTER GUARD

E-Z Leaf Sweep

4' pcs, 25 pcs/box
5" - part # 3924050XXX
6" - part # 3924060XXX



Available in: White (001), Black (004)

E-Z Leaf Protection

4' pcs, 25 pcs/box
part # 3925050XXX



Available in: White (001), Black (004)

5. **Solid:** Utilizes surface tension to separate water from debris, putting the water back into the gutter and the debris slides off onto the ground.

Pros: Available in wide array of colors, very effective, requires less maintenance.

Cons: Surface tension diminishes with too much water speed, shingles must be lifted, can be visible from the street, can overflow in high volume areas such as inside corners, pine needles may stick in louvers.

SOLID GUTTER GUARD

LeafFree

4' pcs, 25 pcs/box
part # 395215XXX



For 5" & 6"

Leaffree High Water Flow

4' pcs, 25 pcs/box
part # 395225XXX



For 5" & 6"